

Layer

A product from **SXI**



Product Overview

XLayer is an advanced data and system integration hub that enables seamless automated communication, integration and convergence of multiple data sources, technologies, systems and applications on a centralised, highly available management platform.

XLayer's trusted reliability and performance enables you to connect, change and integrate data swiftly and effortlessly without the need for expensive software development or coding.

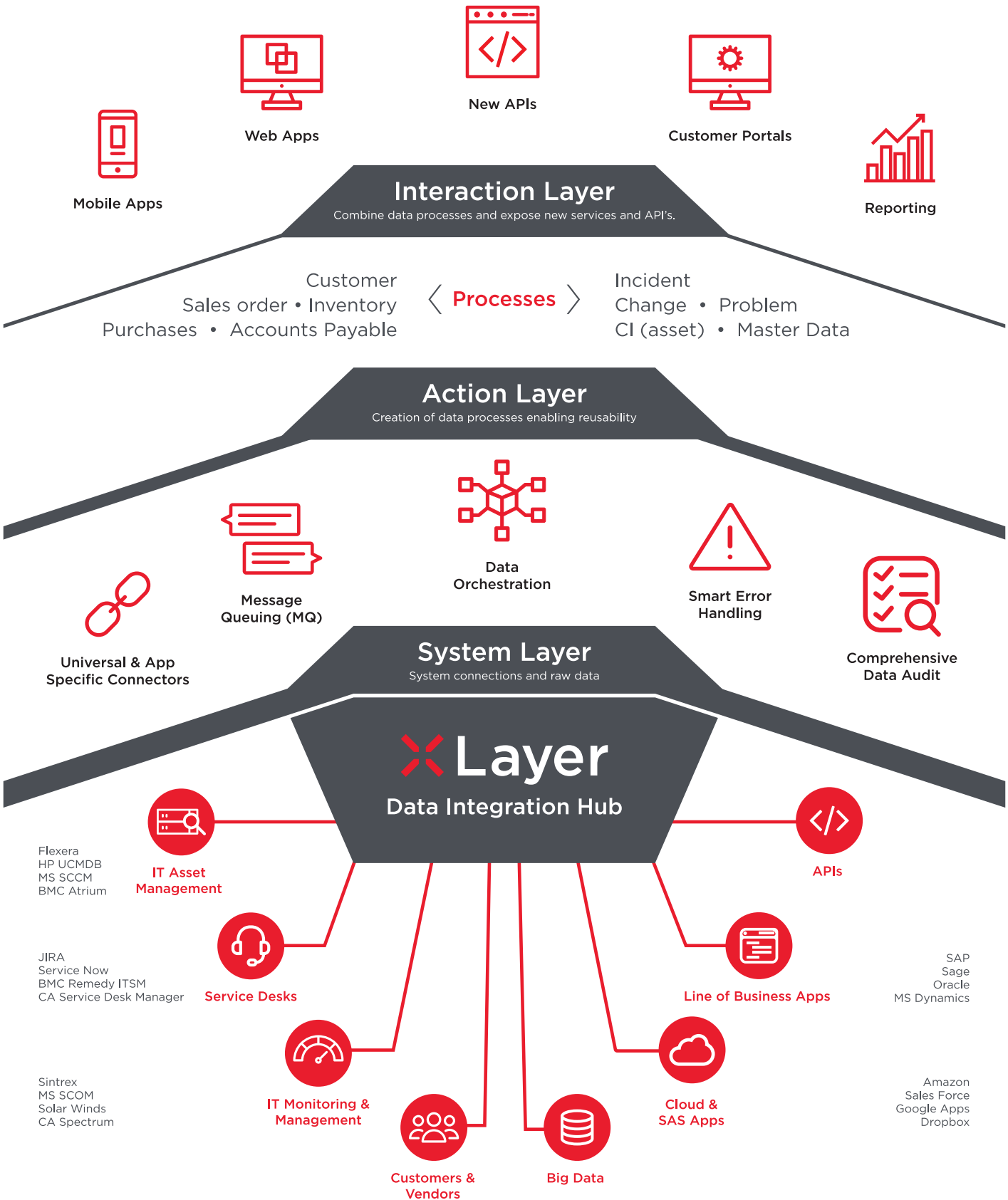
Converging existing and new environments

- Merge legacy technology, existing on-premise systems, and new and emerging cloud based business applications
- Connect different languages, methods and processes of various technologies together in a single, scalable, easily accessible and interchangeable way
- Make relevant and trusted data available for use - and reuse

Creating value from complexity

- Give your business the power to easily access any system and data sources that you may need and present this in a modern, interactive user experience
- XLayer aligns with your IT strategy, adapting to new technologies and easily scaling as your business grows
- Realise the full value of all of your systems, applications, technologies and data, to the benefit of your business and its people





XLayer Approach

XLayer simplifies, creating order from the seeming chaos of multiple data streams, systems, processes and applications, and serving it up to you in a way that makes sense.



XLayer for Business

XLayer equips your management team with the ability to make rapid, reliable business decisions by providing your business with a visual representation of trusted, unified data for use across the entire value chain.

Benefits:

- Reduces integration complexity and maintenance cost
- Timely and trusted data delivery for company-wide use improves business operations and reduces risk
- Rapid on-boarding of new applications and technologies
- Combines data from various applications and data sources, and presents it in a modern and interactive user interface with rich controls
- Promotes data reuse for faster, more cost-effective solution deployment
- Modernises business critical legacy systems without developing it from scratch
- Flexible solution design
- Robust and reliable, ensuring business continuity
- See true data quality and value
- Visual representation that makes it far easier for people on the business side to understand and trust the data without relying completely on the IT department



Capabilities

- Real time, automatic and accurate communications between all internal, customer and partner applications and data sources (ERP, HR, ITSM, Financial, etc.)
- Centralised management and control hub for all systems, featuring rich data logging, auditing and dashboarding
- Robust, codeless environment to connect systems, and transform and integrate data, at any scale and any speed
- Eliminates point-to-point interfaces
- Leading class data visualisation
- Use configuration to create API's and populate Data Lakes
- Unique exception handling that provides logical solutions to correct errors as and when they occur
- Message routing according to business requirements
- Supports data latency (batch, real-time, or near real-time)
- Integration with legacy technology such as Files, Databases, FTP, SFTP, SMTP, IMAP, POP3, Packaged and/or home-grown application interfaces
- Decouples data sources from destinations so that applications can publish data once to the hub, to support any number of consuming applications
- High availability and data security
- ITSM focused add-on creates a single interface to your Service Desk, and easily onboards systems and processes that need to interact with it
- Easily and securely exposes Service Desk functions to compose a mobile API strategy
- Integrate and transform any IT asset and monitoring event data from multiple sources, and link it to the required business processes and systems



Contact SXI

info@sxi.co.za
www.sxi.co.za

23 Peltier Road,
Sunninghill Office Park,
Unit 3, Sunninghill 2191

