

# Layer

A product from **SXI**



# Product Overview

XLayer is an advanced data and system integration hub that enables seamless automated communication, integration and convergence of multiple data sources, technologies, systems and applications on a centralised, highly available management platform.

**XLayer's trusted reliability and performance enables you to connect, change and integrate data swiftly and effortlessly without the need for expensive software development or coding.**

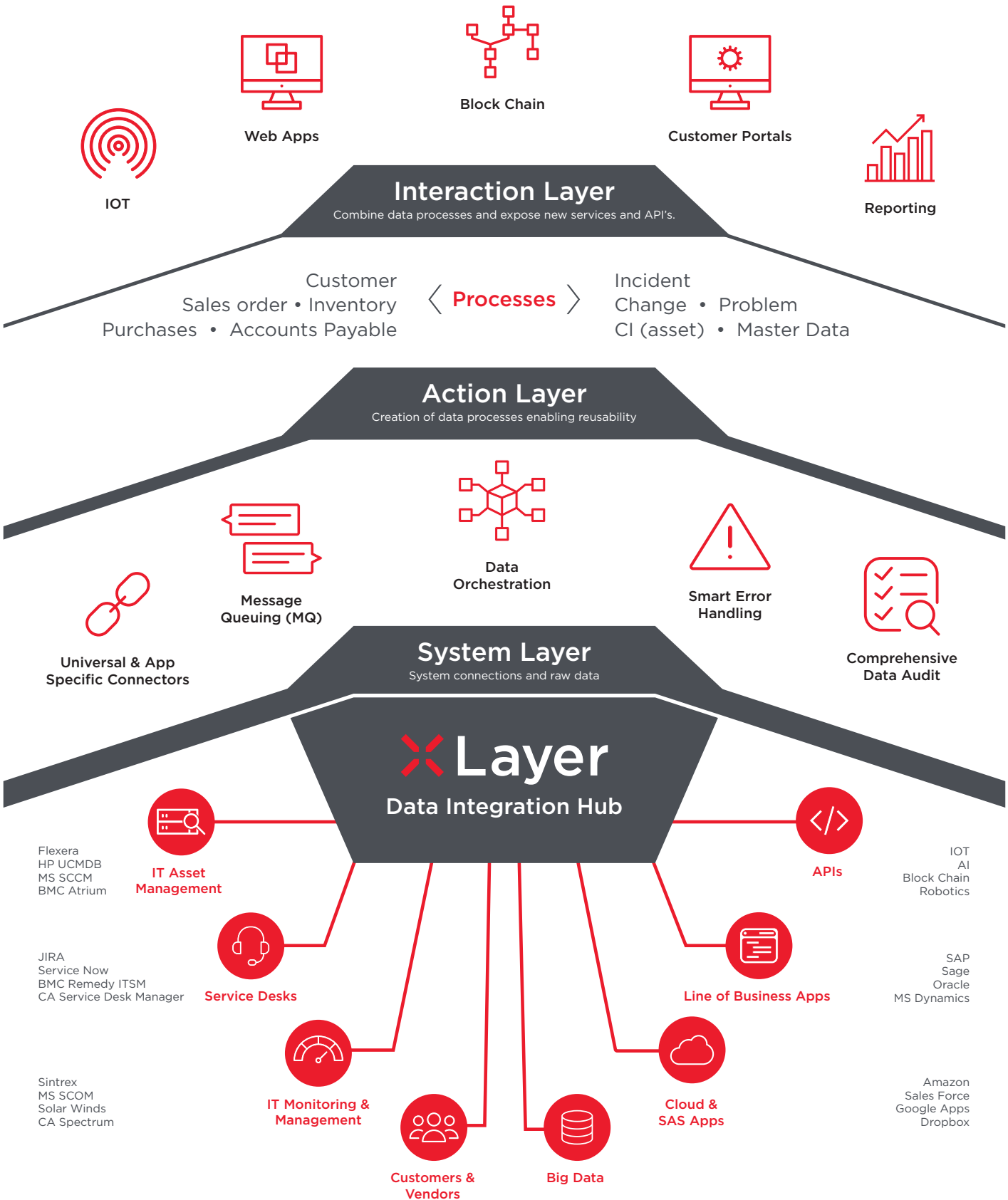
## Converging existing and new environments

- Merge legacy technology, existing on-premise systems, and new and emerging cloud based business applications
- Connect different languages, methods and processes of various technologies together in a single, scalable, easily accessible and interchangeable way
- Make relevant and trusted data available for use - and reuse

## Creating value from complexity

- Give your business the power to easily access any system and data sources that you may need and present this in a modern, interactive user experience
- XLayer aligns with your IT strategy, adapting to new technologies and easily scaling as your business grows
- Realise the full value of all of your systems, applications, technologies and data, to the benefit of your business and its people





# XLayer Approach

XLayer simplifies, creating order from the seeming chaos of multiple data streams, systems, processes and applications, and serving it up to you in a way that makes sense.



## XLayer for Business

XLayer equips your management team with the ability to make rapid, reliable business decisions by providing your business with a visual representation of trusted, unified data for use across the entire value chain.

### Benefits:

- Reduces integration complexity and maintenance cost
- Timely and trusted data delivery for company-wide use improves business operations and reduces risk
- Rapid on-boarding of new applications and technologies
- Combines data from various applications and data sources, and presents it in a modern and interactive user interface with rich controls
- Promotes data reuse for faster, more cost-effective solution deployment
- Modernises business critical legacy systems without developing it from scratch
- Flexible solution design
- Robust and reliable, ensuring business continuity
- See true data quality and value
- Visual representation that makes it far easier for people on the business side to understand and trust the data without relying completely on the IT department



## Capabilities

- Real time, automatic and accurate communications between all internal, customer and partner applications and data sources (ERP, HR, ITSM, Financial, etc.)
- Centralised management and control hub for all systems, featuring rich data logging, auditing and dashboarding
- Robust, codeless environment to connect systems, and transform and integrate data, at any scale and any speed
- Eliminates point-to-point interfaces
- Leading class data visualisation
- Use configuration to create API's and populate Data Lakes
- Unique exception handling that provides logical solutions to correct errors as and when they occur
- Message routing according to business requirements
- Supports data latency (batch, real-time, or near real-time)
- Integration with legacy technology such as Files, Databases, FTP, SFTP, SMTP, IMAP, POP3, Packaged and/or home-grown application interfaces
- Decouples data sources from destinations so that applications can publish data once to the hub, to support any number of consuming applications
- High availability and data security
- ITSM focused add-on creates a single interface to your Service Desk, and easily onboards systems and processes that need to interact with it
- Easily and securely exposes Service Desk functions to compose a mobile API strategy
- Integrate and transform any IT asset and monitoring event data from multiple sources, and link it to the required business processes and systems



# Contact SXI

info@sxi.co.za  
www.sxi.co.za

23 Peltier Road,  
Sunninghill Office Park,  
Unit 3, Sunninghill 2191

